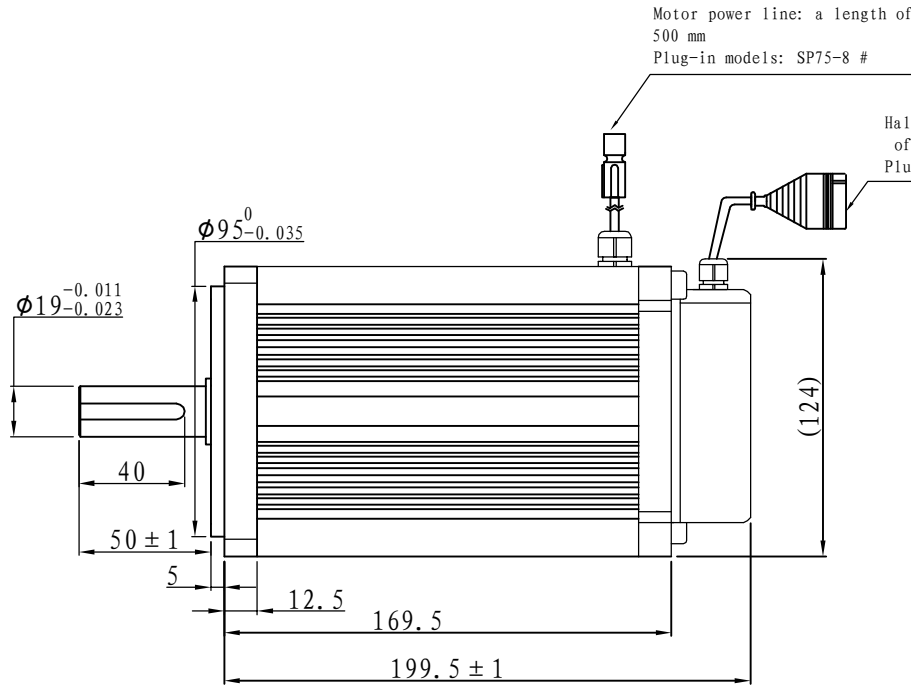
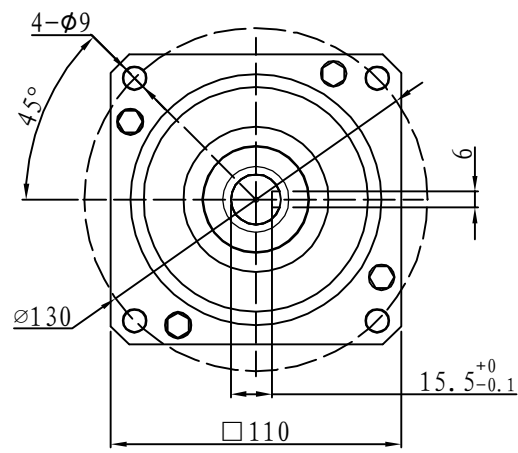


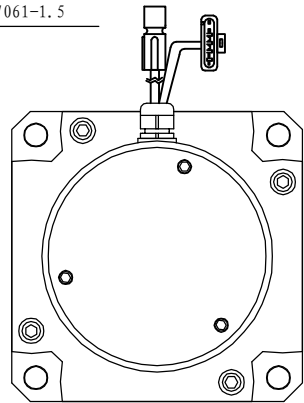
Brushless

Demension

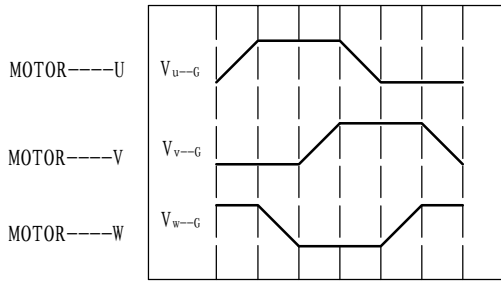
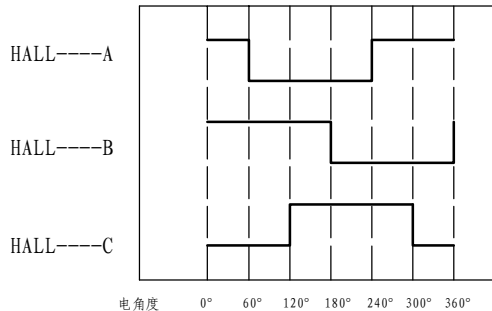


Hall signal lines: a length of 500 mm
Plug-in type: DJ7061-1.5

Motor power line: a length of 500 mm
Plug-in models: SP75-8 #



Motor to Hall Relationship



PHASE TO GROUND VOLTAGE
ROTATION CW FROM THE FLANGE

Line Define

Power Wire

Red	Motor U
Yellow	Motor V
Blue	Motor W

Feedback Wire

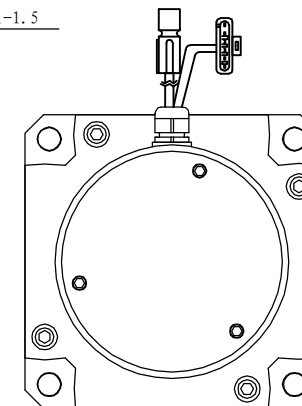
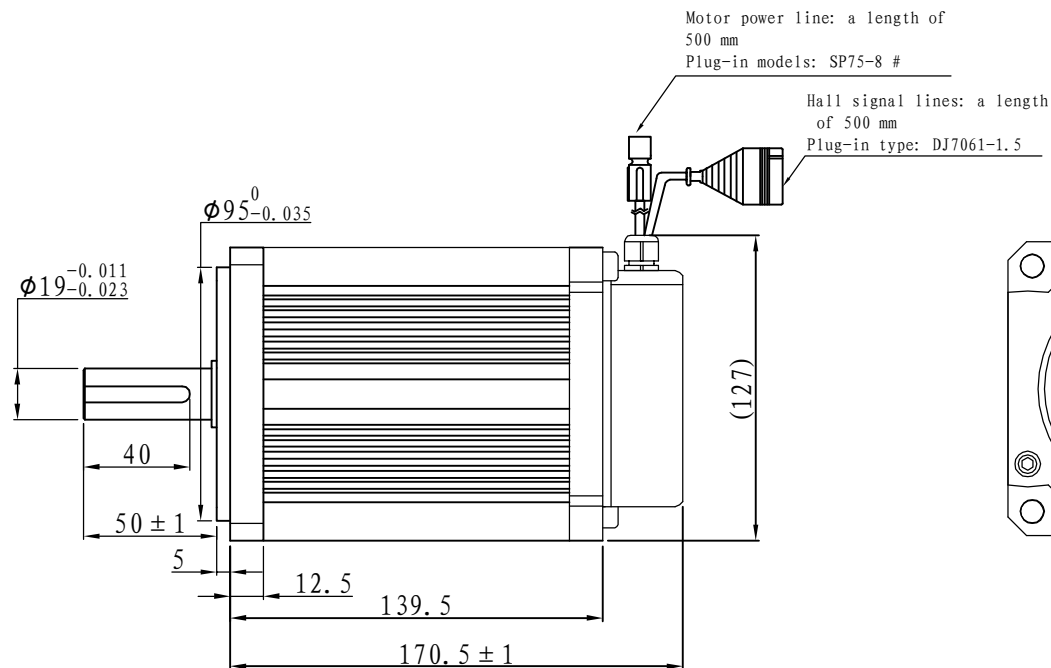
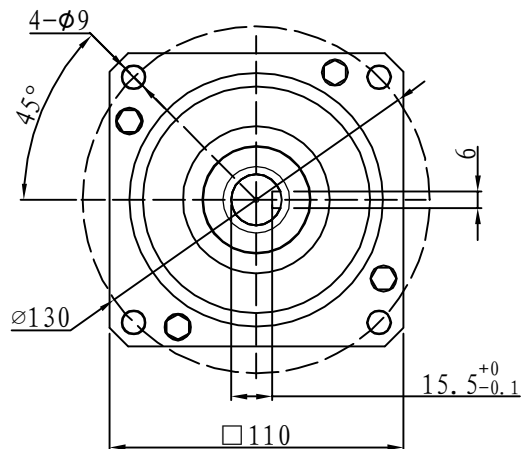
Hall line colour	Hall signal definition	Plug serial number
Orange and black	5V	1
Orange	0V	2
Yellow	Hall A	4
Blue	Hall B	5
Green	Hall C	6

Technical Data

Type	110WD-M04020-24V
Power (KW)	0.8
Rated voltage (V)	24
Rated current (A)	43.6
Rated speed (rpm)	2000
Rated torque (NM)	4
Rotor inertia (Kgcm ²)	6.5
Protection rank	IP65
Insulation rank	F
Appropriate environment	Temperature: 0 ~ 50°C Humidity: < 90% (No dewdrop)
Motor weight (KG)	5.65

Demension

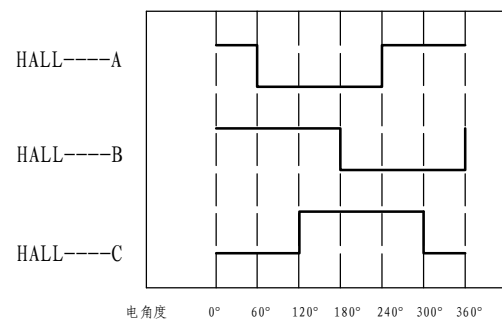
Brushless



Motor to Hall Relationship

Line Define

Tecnichal Data



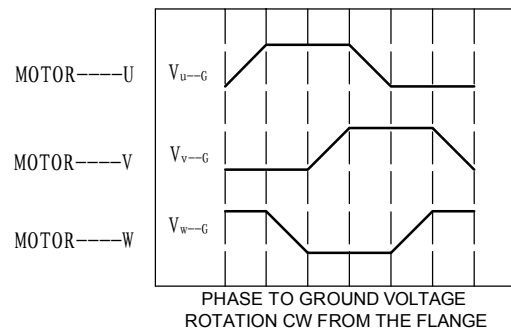
Power Wire

Feedback Wire

Red	Motor U
Yellow	Motor V
Blue	Motor W

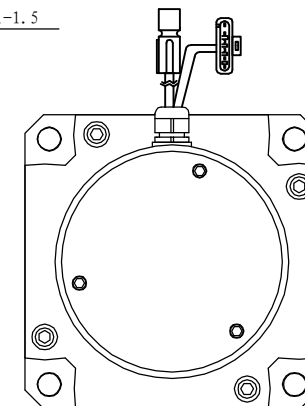
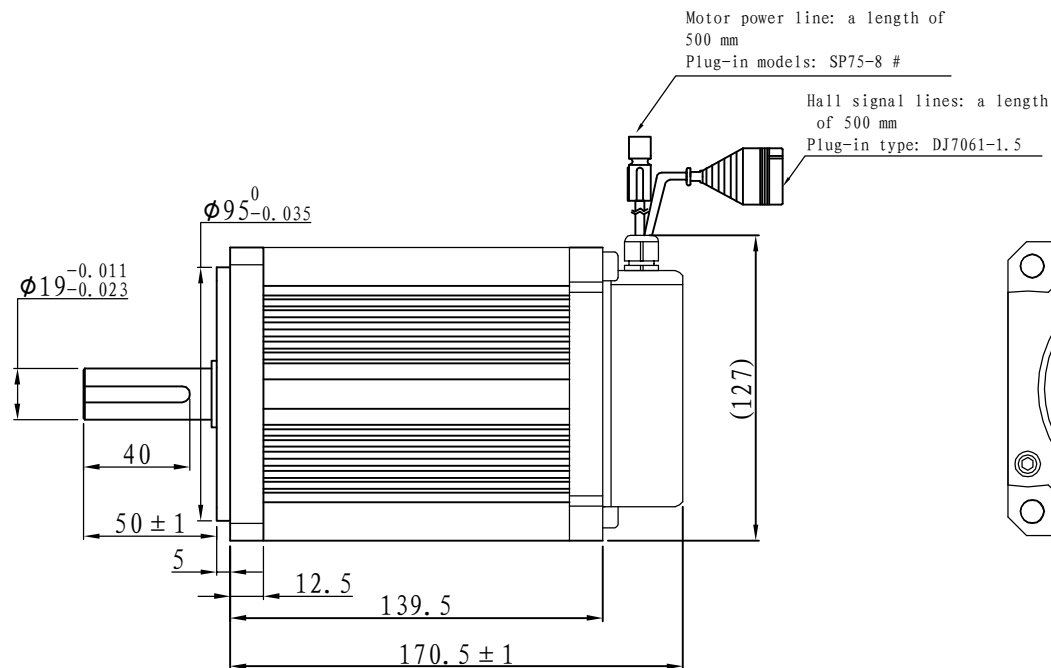
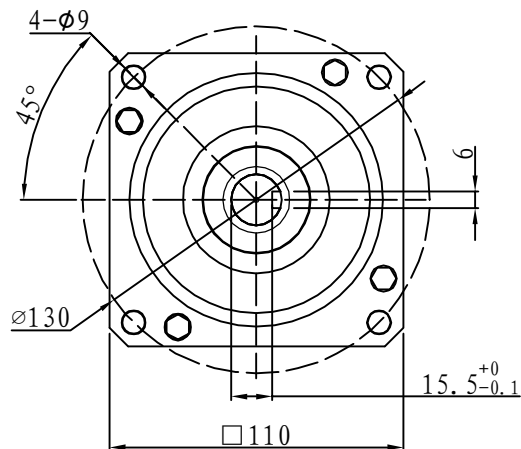
Hall line colour	Hall signal definition	Plug serial number
Orange and black	5V	1
Orange	0V	2
Yellow	Hall A	3
Blue	Hall B	4
Green	Hall C	5

Type	110WD-M04020-48V
Power (KW)	0.8
Rated voltage (V)	48
Rated current (A)	21.8
Rated speed (rpm)	2000
Rated torque (NM)	4
Rotor inertia (Kgc ^{m2})	6.5
Protection rank	IP65
Insulation rank	F
Appropriate environment	Temperature: 0 ~ 50°C Humidity: < 90% (No dewdrop)
Motor weight (KG)	5.65



Demension

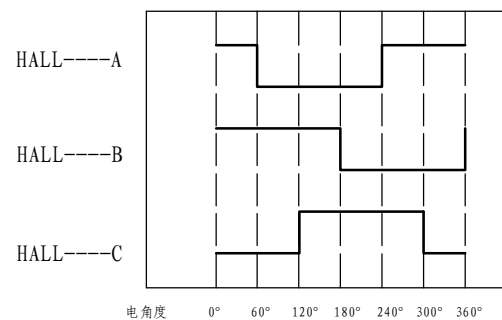
Brushless



Motor to Hall Relationship

Line Define

Tecnichal Data



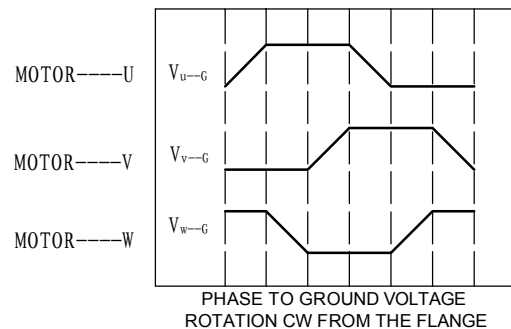
Power Wire

Feedback Wire

Red	Motor U
Yellow	Motor V
Blue	Motor W

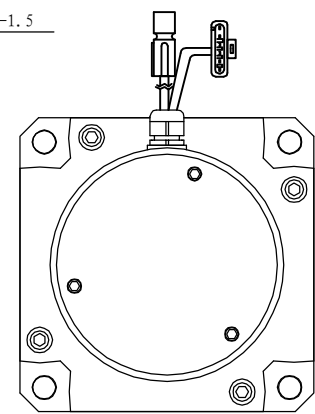
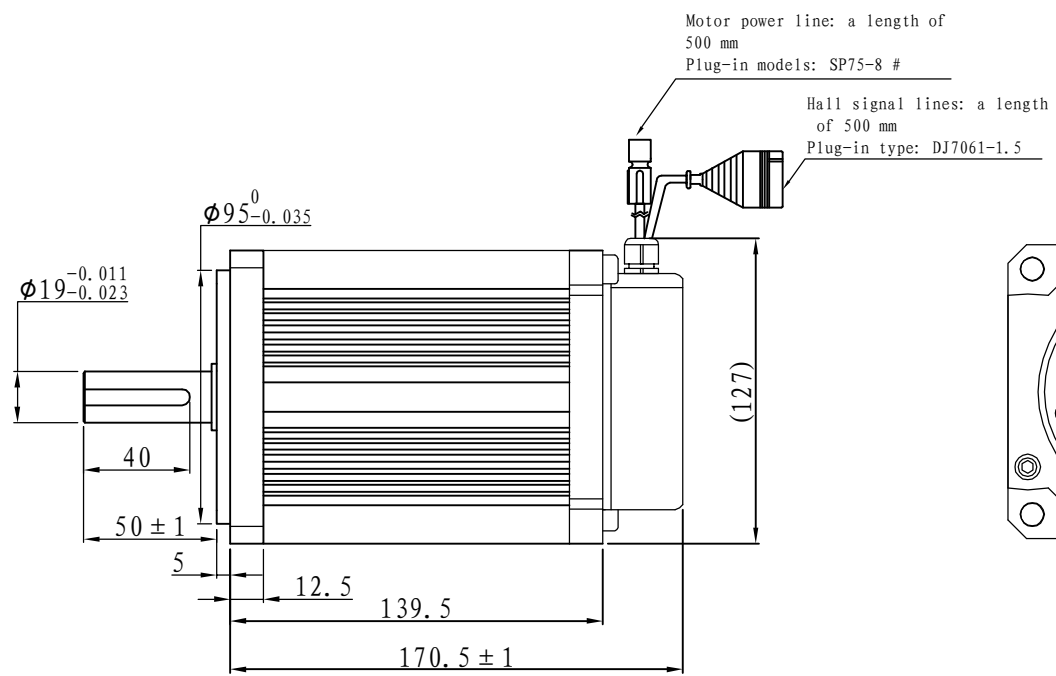
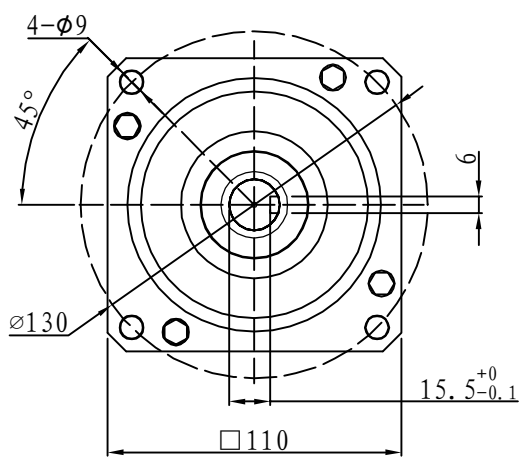
Hall line colour	Hall signal definition	Plug serial number
Orange and black	5V	1
Orange	0V	2
Yellow	Hall A	3
Blue	Hall B	4
Green	Hall C	5

Type	110WD-M04020-72V
Power (KW)	0.8
Rated voltage (V)	72
Rated current (A)	14.5
Rated speed (rpm)	2000
Rated torque (NM)	4
Rotor inertia (Kgc ^{m2})	6.5
Protection rank	IP65
Insulation rank	F
Appropriate environment	Temperature: 0 ~ 50°C Humidity: < 90% (No dewdrop)
Motor weight (KG)	5.65

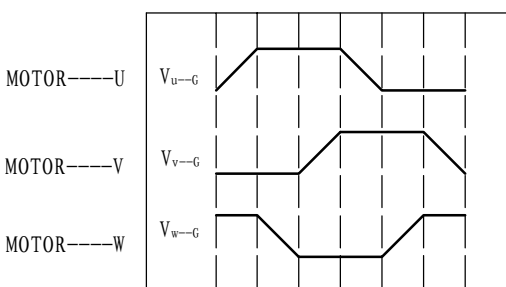
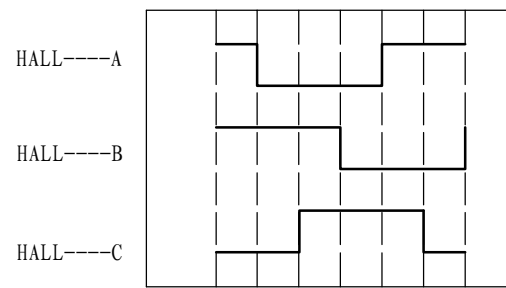


Demension

Brushless



Motor to Hall Relationship



PHASE TO GROUND VOLTAGE
ROTATION CW FROM THE FLANGE

Line Define

Power Wire	
Red	Motor U
Yellow	Motor V
Blue	Motor W

Feedback Wire		
Hall line colour	Hall signal definition	Plug serial number
Orange and black	5V	1
Orange	0V	2
Yellow	Hall A	3
Blue	Hall B	4
Green	Hall C	5

Tecnichal Data

Type	110WD-M04020-96V
Power (KW)	0.8
Rated voltage (V)	96
Rated current (A)	10.9
Rated speed (rpm)	2000
Rated torque (NM)	4
Rotor inertia (Kgcm ²)	6.5
Protection rank	IP65
Insulation rank	F
Appropriate environment	Temperature: 0 ~ 50°C Humidity: < 90% (No dewdrop)
Motor weight (KG)	5.65