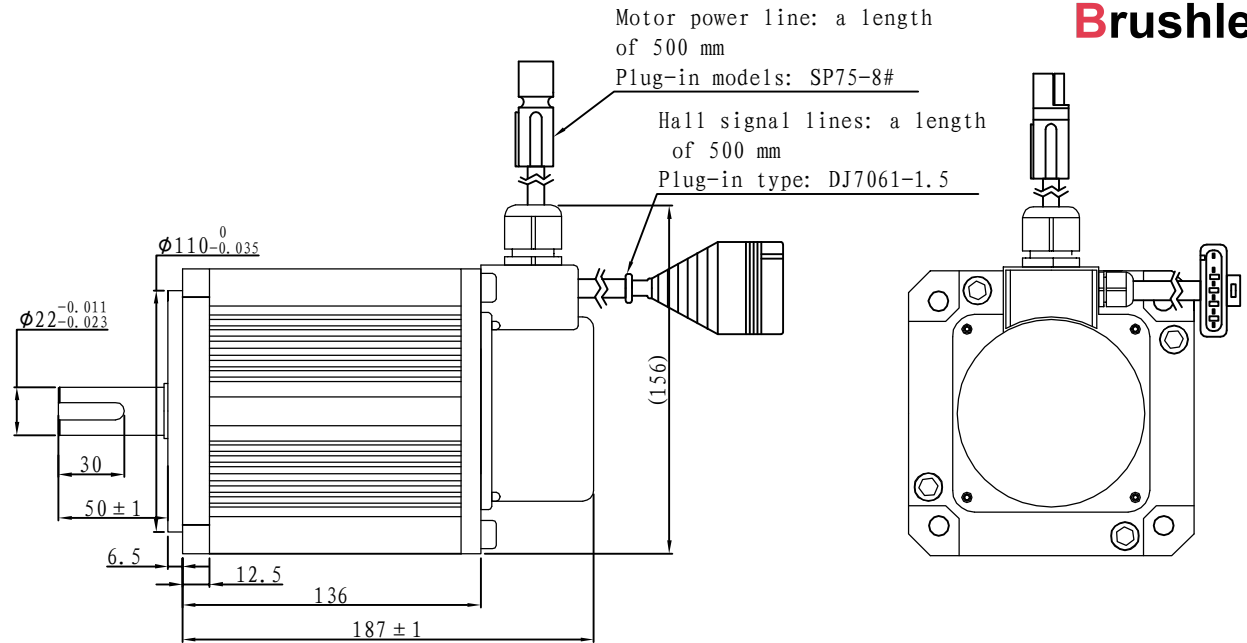
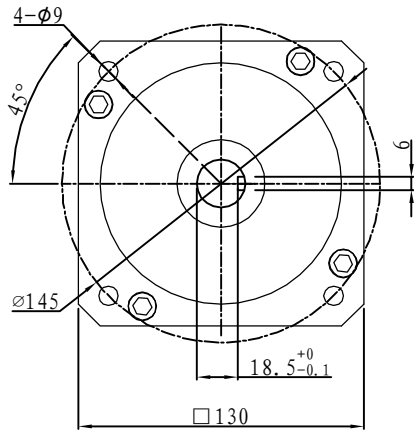
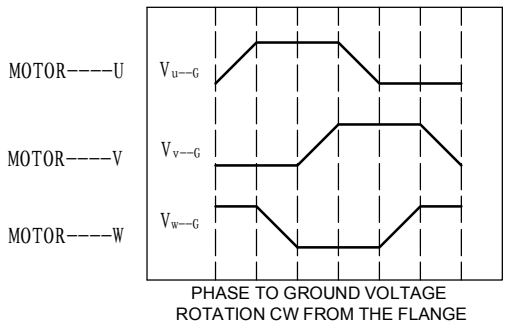
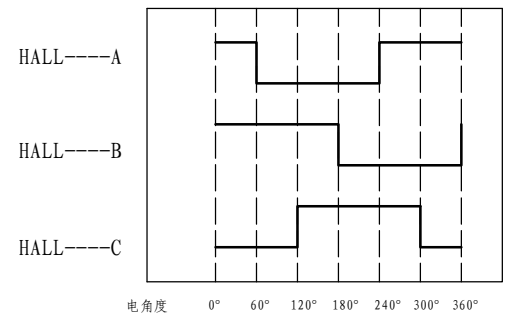


# Demension

# Brushless



## Motor to Hall Relationship



## Line Define

### Power Wire

Red	Motor U
Yellow	Motor V
Blue	Motor W

### Feedback Wire

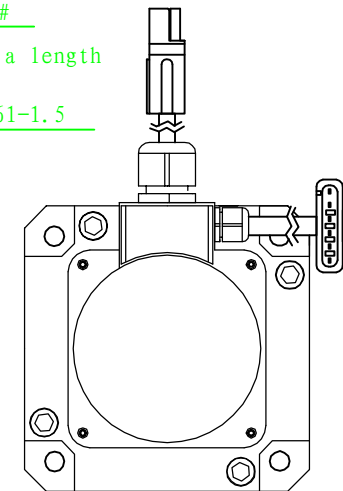
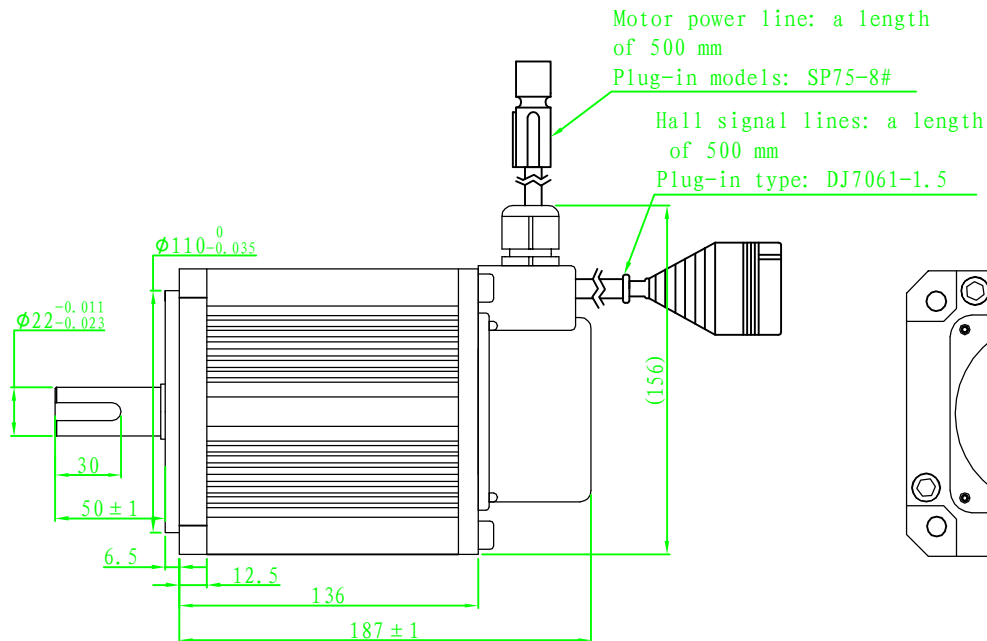
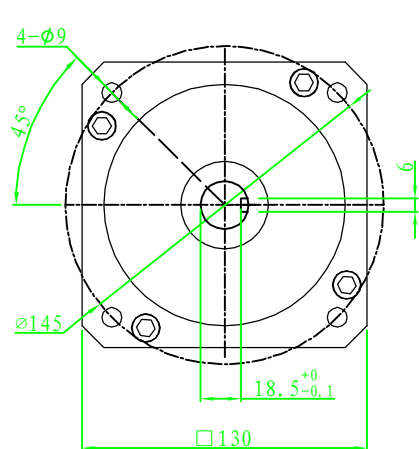
Hall line colour	Hall signal definition	Plug serial number
Orange and black	5V	1
Orange	0V	2
Yellow	Hall A	4
Blue	Hall B	5
Green	Hall C	6

## Tecnichal Data

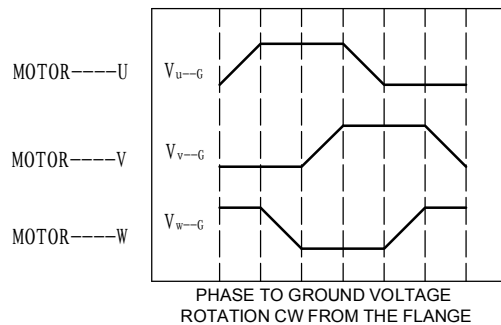
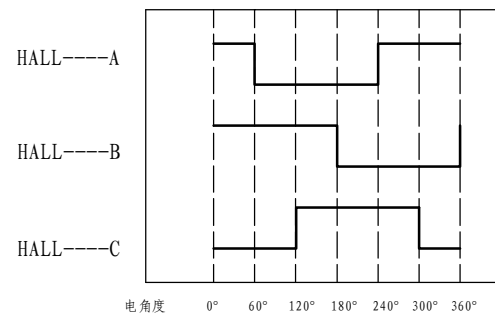
Type	130WD-M06010-24V
Power (KW)	0.6
Rated voltage (V)	24
Rated current (A)	30.8
Rated speed (rpm)	1000
Rated torque (NM)	6
Rotor inertia (Kgc <sup>m</sup> 2)	12.4
Protection rank	IP65
Insulation rank	F
Appropriate environment	Temperature: 0~50°C Humidity: <90% (No dewdrop)
Motor weight (KG)	7.7

# Demension

# Brushless



## Motor to Hall Relationship



## Line Define

### Power Wire

Red	Motor U
Yellow	Motor V
Blue	Motor W

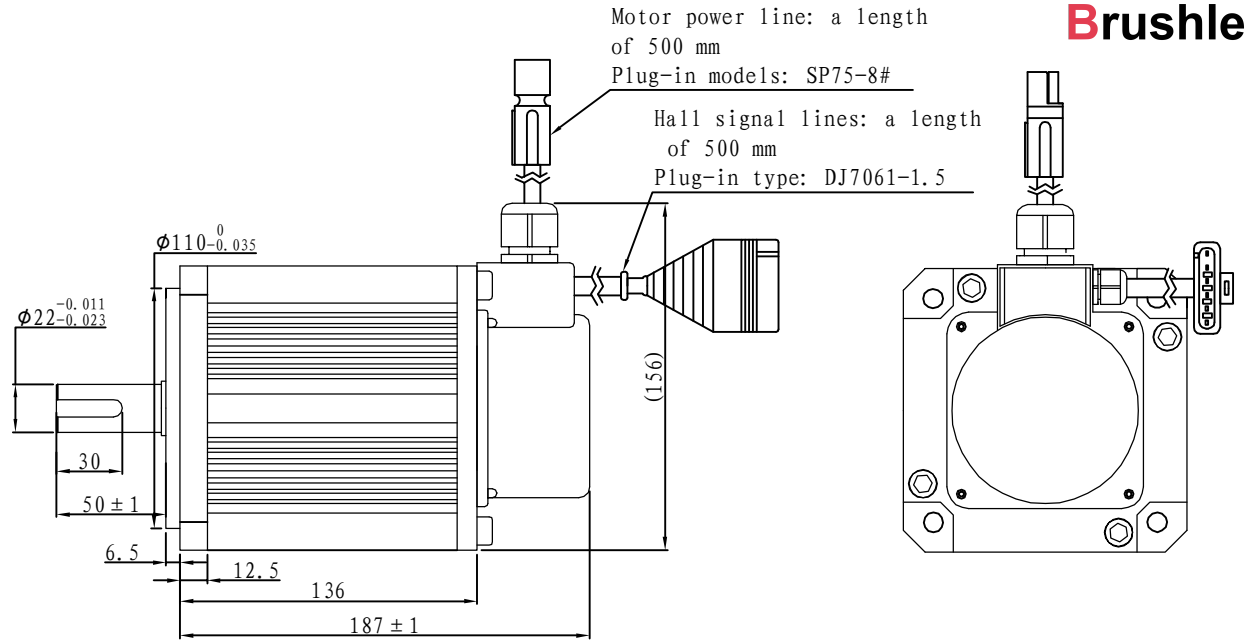
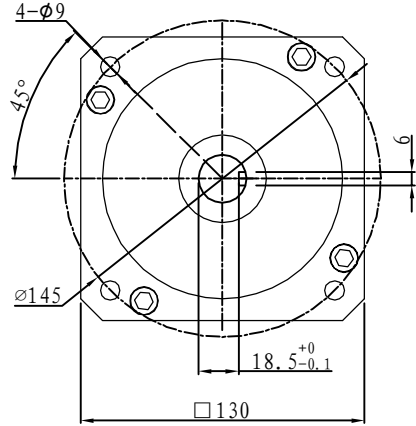
### Feedback Wire

Hall line colour	Hall signal definition	Plug serial number
Orange and black	5V	1
Orange	0V	2
Yellow	Hall A	4
Blue	Hall B	5
Green	Hall C	6

## Tecnichal Data

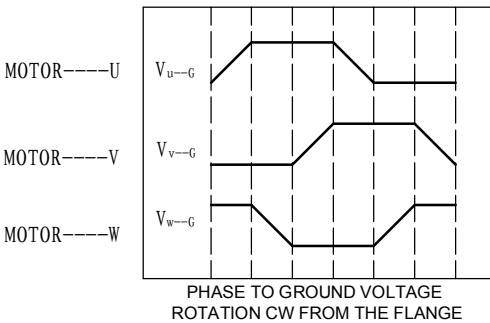
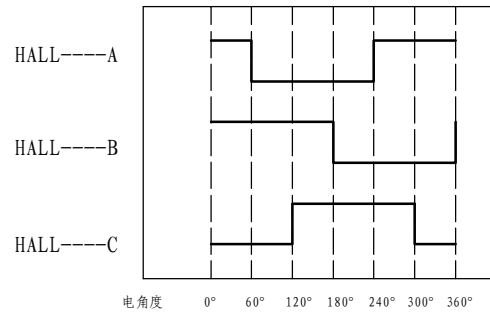
Type	130WD-M06010-48V
Power (KW)	0.6
Rated voltage (V)	48
Rated current (A)	15.4
Rated speed (rpm)	1000
Rated torque (NM)	6
Rotor inertia (Kgcm2)	12.4
Protection rank	IP65
Insulation rank	F
Appropriate environment	Temperature: 0~50℃ Humidity: <90% (No dewdrop)
Motor weight (KG)	7.7

**Demension**



**Brushless**

**Motor to Hall Relationship**



**Line Define**

**Power Wire**

Red	Motor U
Yellow	Motor V
Blue	Motor W

**Feedback Wire**

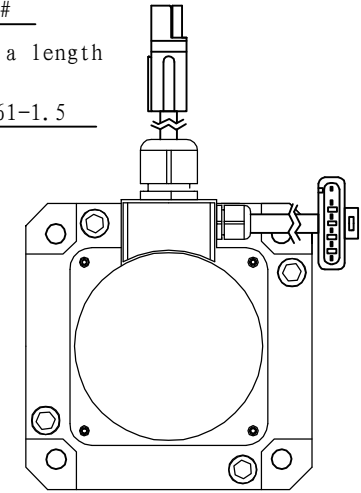
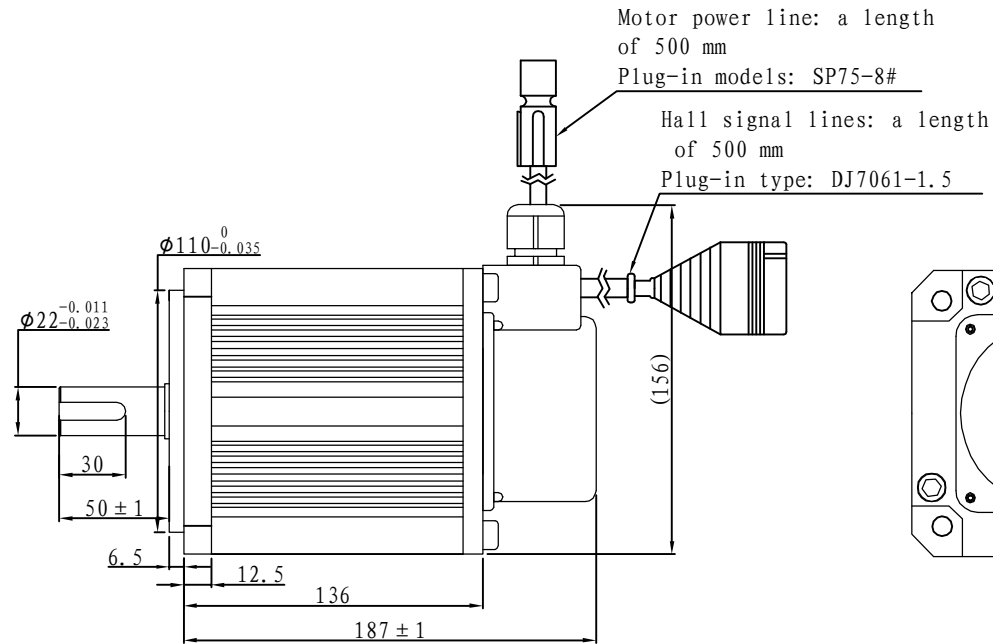
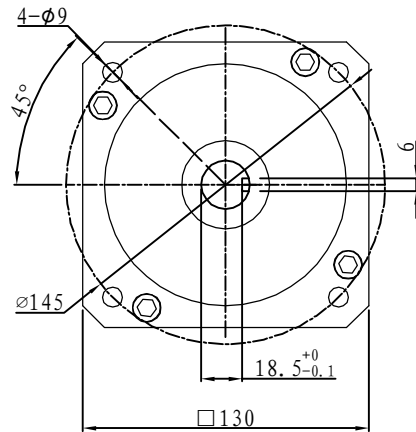
Hall line colour	Hall signal definition	Plug serial number
Orange and black	5V	1
Orange	0V	2
Yellow	Hall A	4
Blue	Hall B	5
Green	Hall C	6

**Tecnichal Data**

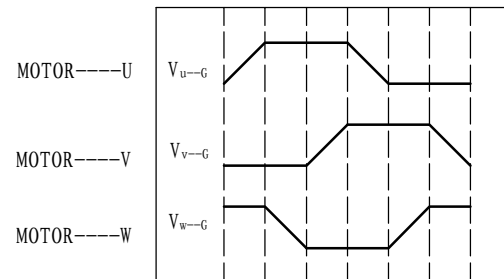
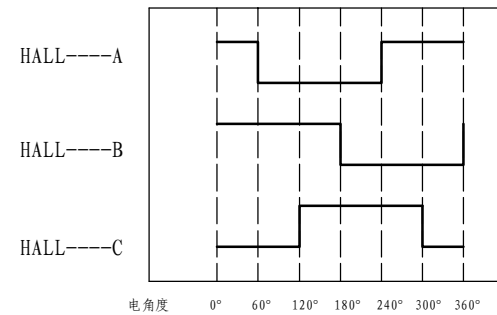
Type	130WD-M06010-72V
Power (KW)	0.6
Rated voltage (V)	72
Rated current (A)	10.3
Rated speed (rpm)	1000
Rated torque (NM)	6
Rotor inertia (Kgcm <sup>2</sup> )	12.4
Protection rank	IP65
Insulation rank	F
Appropriate environment	Temperature: 0~50℃ Humidity: <90% (No dewdrop)
Motor weight (KG)	7.7

# Demension

# Brushless



## Motor to Hall Relationship



PHASE TO GROUND VOLTAGE  
ROTATION CW FROM THE FLANGE

## Line Define

### Power Wire

Red	Motor U
Yellow	Motor V
Blue	Motor W

### Feedback Wire

Hall line colour	Hall signal definition	Plug serial number
Orange and black	5V	1
Orange	0V	2
Yellow	Hall A	4
Blue	Hall B	5
Green	Hall C	6

## Tecnichal Data

Type	130WD-M06010-96V
Power (KW)	0.6
Rated voltage (V)	96
Rated current (A)	7.7
Rated speed (rpm)	1000
Rated torque (NM)	6
Rotor inertia (Kgcm <sup>2</sup> )	12.4
Protection rank	IP65
Insulation rank	F
Appropriate environment	Temperature: 0~50°C Humidity: <90% (No dewdrop)
Motor weight (KG)	7.7