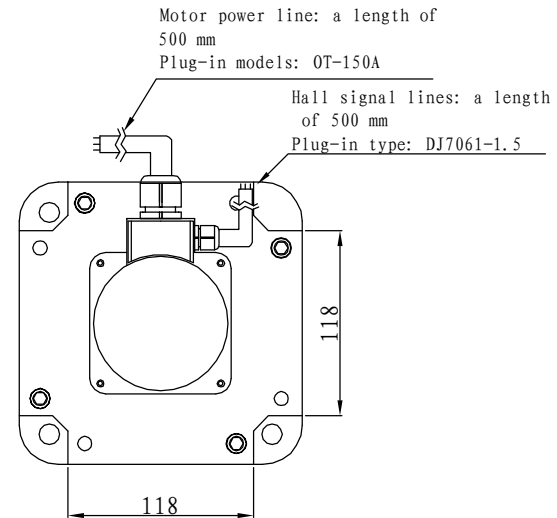
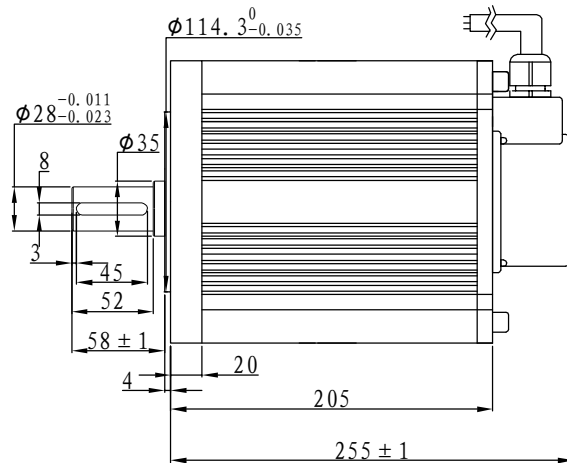
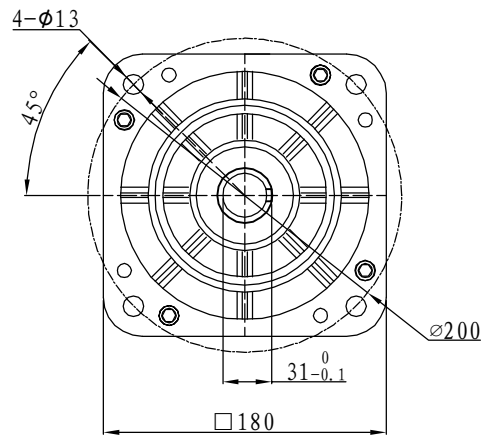
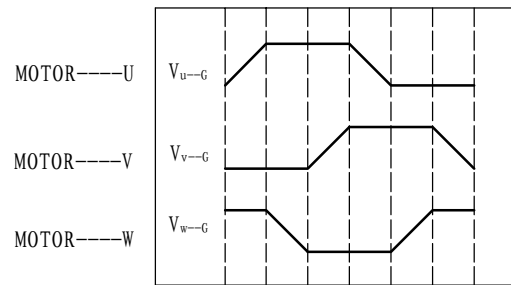
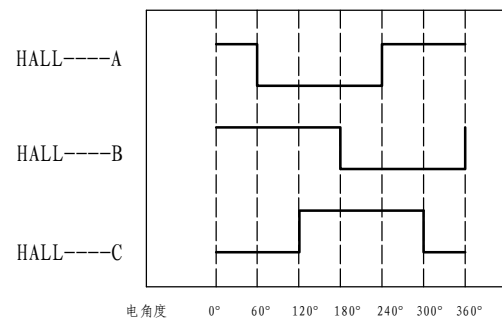


# Demension

# Brushless



## Motor to Hall Relationship



PHASE TO GROUND VOLTAGE  
ROTATION CW FROM THE FLANGE

## Line Define

### Power Wire

Red	Motor U
Yellow	Motor V
Blue	Motor W

### Feedback Wire

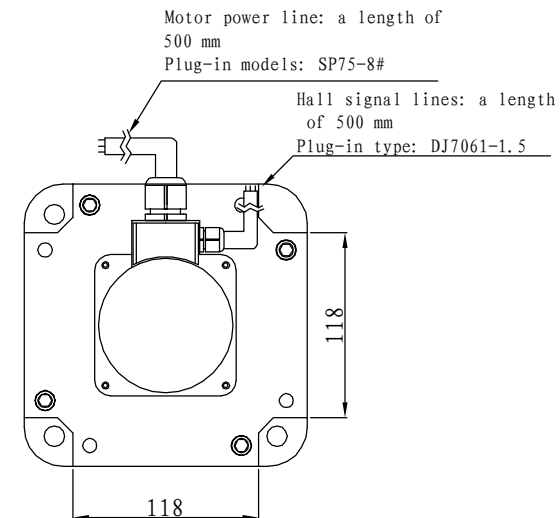
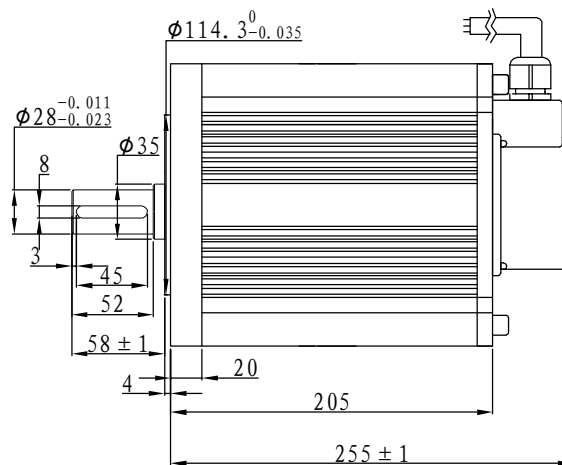
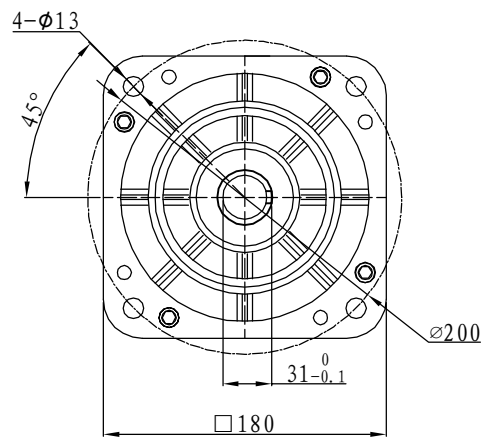
Hall line colour	Hall signal definition	Plug serial number
Orange and black	5V	1
Orange	0V	2
Yellow	Hall A	4
Blue	Hall B	5
Green	Hall C	6

## Tecnichal Data

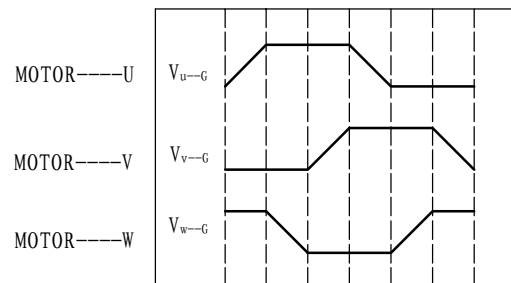
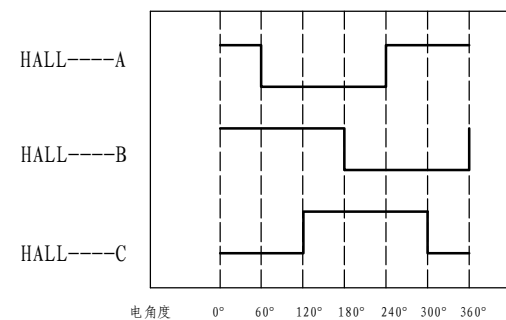
Type	180WD-M12020-48V
Power (KW)	2.5
Rated voltage (V)	48
Rated current (A)	62
Rated speed(rpm)	2000
Rated torque (NM)	12
Rotor inertia (Kgcm <sup>2</sup> )	32.6
Protection rank	IP65
Insulation rank	F
Appropriate environment	<b>Temperature: 0 ~ 50°C</b> <b>Humidity: &lt; 90%</b> <b>(No dewdrop)</b>
Motor weight (KG)	18.5

# Demension

# Brushless



## Motor to Hall Relationship



PHASE TO GROUND VOLTAGE  
ROTATION CW FROM THE FLANGE

## Line Define

### Power Wire

Red	Motor U
Yellow	Motor V
Blue	Motor W

### Feedback Wire

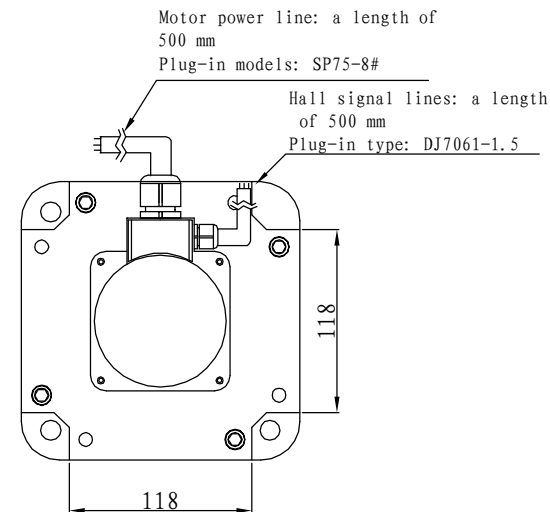
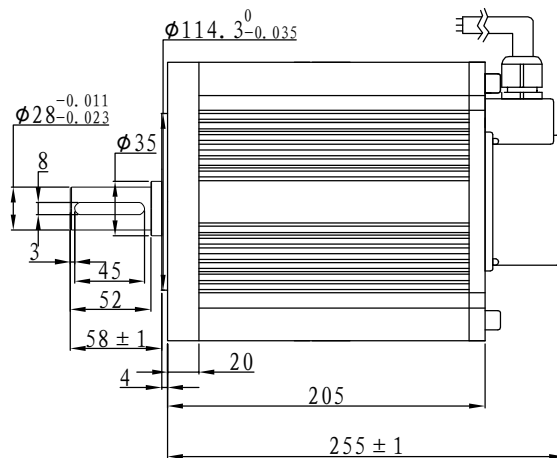
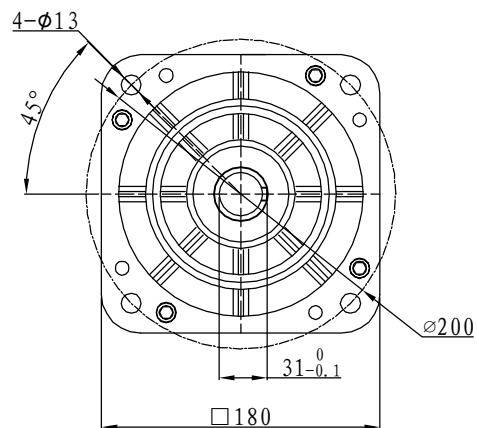
Hall line colour	Hall signal definition	Plug serial number
Orange and black	5V	1
Orange	0V	2
Yellow	Hall A	4
Blue	Hall B	5
Green	Hall C	6

## Tecnichal Data

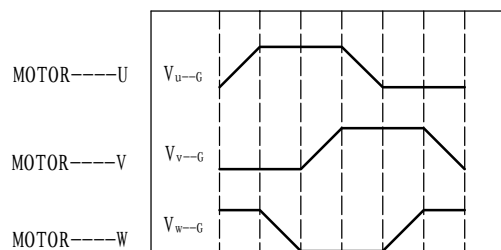
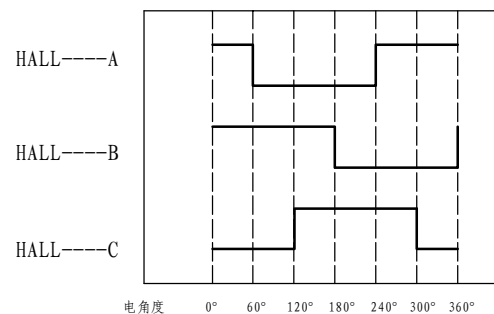
Type	180WD-M12020-72V
Power (KW)	2.5
Rated voltage (V)	72
Rated current (A)	41
Rated speed(rpm)	2000
Rated torque (NM)	12
Rotor inertia (Kgcm <sup>2</sup> )	32.6
Protection rank	IP65
Insulation rank	F
Appropriate environment	<b>Temperature: 0~50°C</b> <b>Humidity: &lt;90%</b> <b>(No dewdrop)</b>
Motor weight (KG)	18.5

# Demension

# Brushless



## Motor to Hall Relationship



PHASE TO GROUND VOLTAGE  
ROTATION CW FROM THE FLANGE

## Line Define

### Power Wire

Red	Motor U
Yellow	Motor V
Blue	Motor W

### Feedback Wire

Hall line colour	Hall signal definition	Plug serial number
Orange and black	5V	1
Orange	0V	2
Yellow	Hall A	4
Blue	Hall B	5
Green	Hall C	6

## Tecnichal Data

Type	180WD-M12020-96V
Power (KW)	2.5
Rated voltage (V)	96
Rated current (A)	31
Rated speed (rpm)	2000
Rated torque (NM)	12
Rotor inertia (Kgcm2)	32.6
Protection rank	IP65
Insulation rank	F
Appropriate environment	Temperature: 0 ~ 50°C Humidity: <90% (No dewdrop)
Motor weight (KG)	18.5